

# State of Wyoming Corner Record

(In compliance with the *CORNER PERPETUATION AND FILING ACT*, Wyoming Statutes, 1977, Section 36-11-101, et. seq., and the Rules and Regulations of the Board of Registration for Professional Engineers and Professional Land Surveyors)

Reverse side of this form may be used if more space is needed.

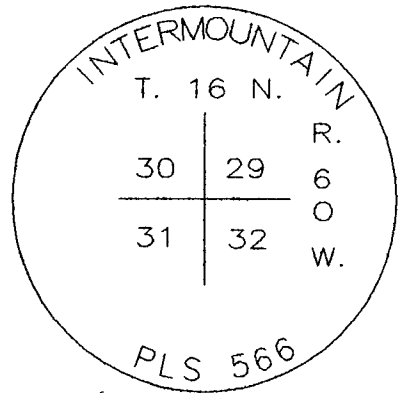
Record of original survey and citation of source of historical information (if corner is lost or obliterated). Description of corner monumentation evidence found and/or monument and accessories established to perpetuate the location of this corner. Sketch of relative location of monument, accessories, and reference points with course and distance to adjacent corner(s) (if determined in this survey). Method and rationale for reestablishment of lost or obliterated corner.

FOUND #5 REBAR (BENT)

Referenced base of existing rebar replaced with 3 1/4" aluminum cap on #5 rebar 24" long. Cap set 8" below road surface.

Set reference points as shown.

GLO Record: Sandstone  
(20" x 12" x 4")

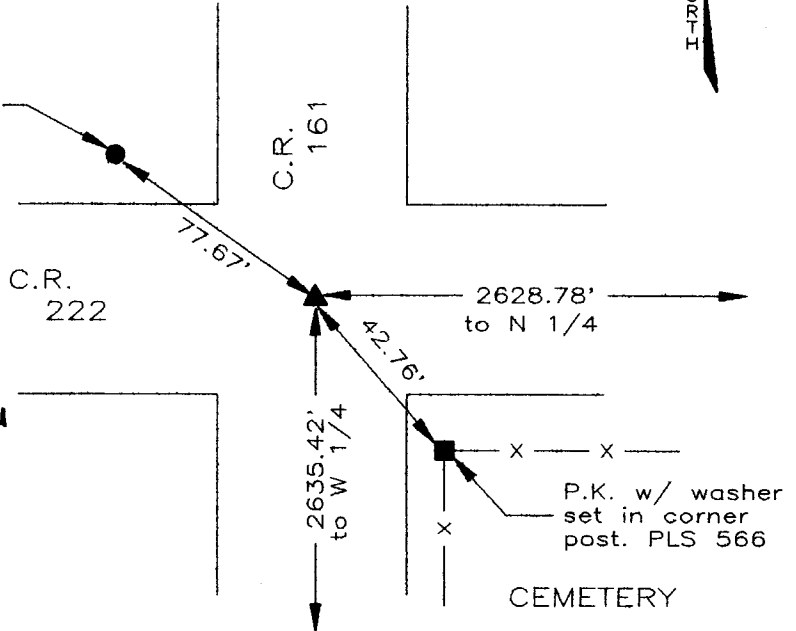


P.K. w/ washer set in power pole PLS 566

**NOTE: SEE RECORDS OF SURVEY**

**SEC 32, T.16N, R.60W FOR CONTROL**

**USED AND ADDITIONAL INFORMATION**



LARAMIE COUNTY CLERK  
 CHEYENNE, WY.  
 JUN 16 PM 3 17  
 163820

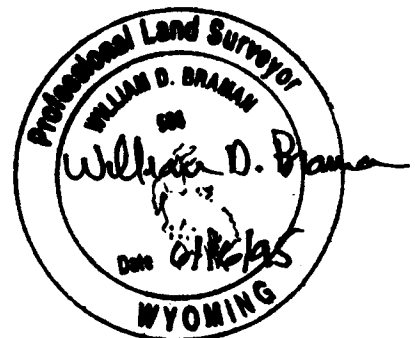
Date of Field Work: 6-29-94 Office Reference: 2747

**CROSS INDEX DIAGRAM**

A	1	2	3	4	5	6	7	8	9	10	11	12	13	14	15	16	17	18	19	20	21	22	23	24	25	
B																										
C																										
D																										
E																										
F																										
G																										
H																										
I																										
J																										
K																										
L																										
M																										
N																										
O																										
P																										
Q																										
R																										
S																										
T																										
U																										
V																										
W																										
X																										
Y																										
Z																										

Firm/Agency, Address  
**INTERMOUNTAIN PROFESSIONAL SERVICES, INC.**  
 5801 OSAGE AVENUE  
 CHEYENNE WY 82001  
 Telephone Number: (307) 632-3138

This corner record was prepared by me or under my direction and supervision.  
**SEAL & SIGNATURE**



Corner Name: SEC COR 30/29 31/32 Section: T 16N R 60W 6 P.M. Cross-Index No.: V-5